

# BNY TARGET RISK PORTFOLIOS

## US EQUITY 100/0 MODEL

FACT SHEET<sup>1</sup> | MARCH 31, 2026

### Investment Objective

Capital appreciation; maximization of return

### Risk Profile

Not concerned with fluctuation levels in the portfolio

### Portfolio Characteristics

#### Number of Holdings (by Asset Class)

Equity	5
Fixed Income	0
Real Assets/Alternatives	0

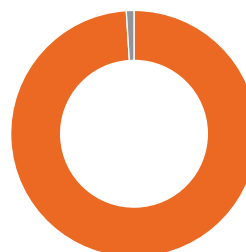
#### Weighted Internal Expense Ratio

Gross	0.42%
Net	0.40%

**Active Allocation** 60.00%

**Passive/Index Allocation** 40.00%

### ASSET ALLOCATION<sup>2</sup>



Equity	99.00%
Cash	1.00%
Real Assets/Alternatives	0.00%
Fixed Income	0.00%

### Average Annual Returns (as of 3/31/26)

Model Name	3-Month	Year-to-Date	1-Year	3-Year	5-Year	Since Inception	Inception Date
Target Risk US Equity 100/0 (Gross)	-2.65%	-2.65%	16.88%	-	-	13.79%	August 31, 2023
Target Risk US Equity 100/0 (Net)	-3.00%	-3.00%	15.23%	-	-	12.07%	August 31, 2023
Bloomberg U.S. Aggregate Bond	-0.05%	-0.05%	4.35%	3.63%	0.31%	-	-
MSCI USA IMI	-3.89%	-3.89%	18.38%	17.95%	11.04%	-	-
MSCI ACWI ex USA (Net)	-0.71%	-0.71%	24.91%	14.49%	7.02%	-	-

Sources: BNY Mellon Advisors, Inc. (BNY Advisors), MSCI, Bloomberg. Please see the Important Disclosures at the end of this report for index definitions. Performance for returns of one year or less is not annualized.

### Calendar Year Returns

Model Name	2025	2024
Target Risk US Equity 100/0 (Gross)	13.64%	18.59%
Target Risk US Equity 100/0 (Net)	12.01%	16.67%

Sources: BNY Advisors.

<sup>1</sup>Data and performance is as of March 31, 2026, unless noted otherwise. <sup>2</sup>Asset allocations subject to change at any time without notice.

BNY Mellon Advisors, Inc. is an investment adviser registered in the United States under the Investment Advisers Act of 1940 and a subsidiary of The Bank of New York Mellon Corporation. BNY Advisors is the brand name under which BNY Mellon Advisors, Inc. conducts its investment advisory business.

**All investments are subject to risk, including the loss of principal.**

For additional information, please refer to the Important Disclosures at the end of this report.

# BNY TARGET RISK PORTFOLIOS

## US EQUITY 100/0 MODEL

FACT SHEET<sup>1</sup> | MARCH 31, 2026

### TOP 10 HOLDINGS\*

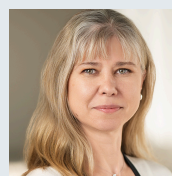
Holding	Type	% of Model	Asset Class	Style
JPMorgan Large Cap Growth I	MF	27.50%	Equity	U.S. Large-Cap
BNY Mellon Dynamic Value ETF	ETF	24.50%	Equity	U.S. Large-Cap
BNY Mellon US Large Cap Core Equity ETF	ETF	23.00%	Equity	U.S. Large-Cap
BNY Mellon US Mid Cap Core Equity ETF	ETF	16.00%	Equity	U.S. Mid-Cap
Boston Partners Small Cap Value	MF	8.00%	Equity	U.S. Small-Cap

\*The securities shown represent the top 10 portfolio holdings based on the largest weightings across the portfolios as of March 31, 2026. The holdings and/or percentages of each holding may change at any time without notice. The holdings shown do not represent all of the securities purchased or sold over the past year, and there is no guarantee that the same or similar securities will be purchased or held in accounts in the future. It should not be assumed that investment in the securities shown was or will be profitable. MF = Mutual Fund ETF = Exchange-Traded Fund.

### Portfolio Managers



Tony Destro, CFA  
PORTFOLIO MANAGER



Elena Goncharova, CFA  
PORTFOLIO MANAGER

**All investments are subject to risk, including the loss of principal.** For additional information, please refer to the Important Disclosures at the end of this report.

## IMPORTANT DISCLOSURES

© 2026 BNY Mellon Advisors, Inc. All rights reserved. BNY Mellon Advisors, Inc. is an investment adviser registered in the United States under the Investment Advisers Act of 1940 and a subsidiary of The Bank of New York Mellon Corporation. BNY Advisors is the brand name under which BNY Mellon Advisors, Inc. conducts its investment advisory business. BNY is the corporate brand of The Bank of New York Mellon Corporation and may be used to reference the corporation as a whole and/or its various subsidiaries generally. The information contained herein, including any attachments, is proprietary to BNY Advisors. It may not be reproduced, retransmitted or redistributed in any manner without express written consent.

Trademark(s) belong to their respective owners. This material does not constitute a guarantee of any kind by The Bank of New York or any of its affiliates. This material is for general information purposes only and is not intended to provide legal, tax, accounting, investment, financial or other professional advice on any matter. BNY Advisors is not responsible for updating any information contained within this material and information contained herein is subject to change without notice.

It is not permissible to use this material as sales or marketing material or for other prospecting purposes, nor can it be used in promotional mailings to prospective investors.

The statements contained herein are based upon the opinions of BNY Advisors and the data available at the time of publication and are subject to change at any time without notice.

This communication does not constitute investment advice and is for informational purposes only, is not intended to meet the objectives or suitability requirements of any specific individual or account, and does not provide a guarantee that the investment objective of any model will be met. An investor should assess his/her own investment needs based on his/her own financial circumstances and investment objectives.

Neither the information nor any opinions expressed herein should be construed as a solicitation or a recommendation by BNY Advisors or its affiliates to buy, hold or sell any securities or investments or hire any specific manager.

The information contained herein has been obtained from sources believed to be reliable.

It is important to remember that there are risks inherent in any investment and that there is no assurance that any investment vehicle, mutual fund, asset class, style, index or strategy will provide positive performance over time.

Diversification and strategic asset allocation do not guarantee a profit nor protect against a loss in declining markets. **Past performance is not a guarantee of future results. All investments are subject to risk, including the loss of principal.**

BNY Target Risk Portfolios performance data shown represents historical gross and net composite performance calculated by BNY Advisors.

BNY Target Risk Portfolios performance data is derived from accounts directly monitored by BNY Advisors, at such time as there are sufficient accounts to produce a meaningful statistical sampling.

The inception of a published BNY Advisors composite begins when five accounts with the same management style have been active with BNY Advisors for one full month. Each composite includes only fee-paying, discretionary accounts. BNY Advisors generally includes actual, fee-paying discretionary accounts in at least one composite, but excludes those where fewer than five accounts exist in a particular manager/style. Terminated accounts are permanently included in all monthly composites in which they were previously active for the entire month. They are excluded in the month in which they terminate. All returns through December 31, 2017 were calculated using the Modified Dietz method. All returns thereafter are calculated using a daily time weighted rate of return.

It is important to note that the performance of a client's actual portfolio may differ from the performance returns shown due to the timing of deposits and withdrawals, account restrictions, and the effects of periodic rebalancing, as well as other factors. Individual client returns will be reduced by advisory fees and any other fees and/or expenses incurred in the management of the client's account. Returns for periods longer than one year are annualized.

When evaluating performance, BNY Advisors believes investors should consider the risks inherent with investing in any one asset class or style.

**The performance data quoted represents past performance and does not guarantee future results. Current performance may be lower or higher than the performance data quoted. The investment return and principal value of an investment will fluctuate, so that an investor's assets, when sold, may be worth more or less than their original cost. For performance data current to the most recent month-end, please call (800) 200-3033, option 3.**

**Composite returns (gross of fees) represent historical gross performance with no deduction for advisory fees (which include program fees, consultant fees and other applicable fees); assumes reinvestment of dividends, capital gains and any other earnings; and is net of transaction costs. Individual client returns will be reduced by the advisory fee and any other fees and/or expenses incurred in the management of a client's account. Returns for periods longer than one year are annualized.**

**Composite returns (net of fees) reflect the deduction of applicable advisory fees and transaction costs, and assume the reinvestment of dividends, income and any other earnings. Applicable advisory fees are based upon actual advisory fees deducted from each account in the composite. Returns for periods longer than one year are annualized.**

BNY Target Risk Portfolios contain open-end mutual funds and exchange-traded funds (ETFs). ETFs trade like stocks, are subject to investment risk, including possible loss of principal. The risks of investing in the ETF typically reflect the risks associated with the types of instruments in which the ETF invests. ETF shares are listed on an exchange, and shares are generally purchased and sold in the secondary market at market price. At times, the market price may be at a premium or discount to the ETF's per share



NAV. In addition, ETFs are subject to the risk that an active trading market for an ETF's shares may not develop or be maintained. Buying or selling ETF shares on an exchange may require the payment of brokerage commissions.

**Investors should carefully consider the investment objectives, risks, charges, fees and expenses of any mutual fund or ETF before investing. This and other important information can be found in the fund/ETF prospectus and, if available, the summary prospectus, which may be obtained through your financial advisor, by calling the fund/issuer or visiting the respective fund company's/issuer's website or by visiting the SEC's EDGAR website at <https://www.sec.gov/edgar/search/#>. Please read the prospectus and, if available, the summary prospectus carefully.**

The inclusion of mutual funds and ETFs that are advised or sub-advised by an investment advisory affiliate of BNY Advisors (Proprietary Funds) in BNY Target Risk Portfolios models creates a conflict of interest for BNY Advisors, as our investment advisory affiliates receive compensation when Proprietary Funds are included in a BNY Target Risk Portfolios model. BNY Advisors addresses this conflict through a combination of disclosure to investors and by waiving its advisory and sponsor fees, as applicable, for assets held in the BNY Target Risk Portfolios.

Mutual funds and ETFs included in portfolios charge additional fees and expenses outside of the advisory fee for this product. Mutual funds may additionally charge a redemption fee if shares are redeemed within a specified period of time. The amount of the redemption fee, as well as the minimum holding period, is disclosed in each of the respective fund prospectuses. For complete details, please refer to the fund prospectus.

Mutual funds and ETFs included in portfolios may use derivatives that are often more volatile than other investments and may magnify the fund's gains or losses. An investment that uses derivatives could be negatively affected if the change in the market value of its securities fails to correlate adequately with the values of the derivatives it purchased or sold.

Equity securities (i.e., stocks), as well as portfolios that invest in equity securities, are subject to several general risks, including the risk that the financial condition of the issuer may become impaired or the general condition of the stock market may deteriorate, either of which may cause a decrease in the value of the issuer's securities. Equity securities are susceptible to general stock market fluctuations and to sudden, significant and prolonged increases and decreases in value as market confidence in and perceptions of the security's issuer change. These perceptions are based on various and unpredictable factors, including expectations regarding government, economic, monetary and fiscal policies, inflation and interest rates, economic expansion or contraction, and global or regional political, economic, and banking crises. There can be no assurance that an issuer will pay dividends on outstanding shares of its common stock, as the payment of dividends will generally depend upon various factors, including the financial condition of the issuer and general economic conditions. Holders of common stocks of any given issuer will generally incur more risk than holders of preferred stocks and debt obligations of the same issuer because common stockholders, as owners of the issuer, generally have subordinated rights to receive payments from such issuer in comparison with the rights of creditors or holders of the issuer's debt obligations or preferred stocks. The existence of a liquid trading market for certain equity securities may depend on whether dealers will make a market in such securities. There can be no assurance that a market will be made for any securities, that any market for the securities will be maintained, or that any such market will be or remain liquid. The price at which an equity security may be sold will be adversely affected if trading markets for the security are limited or absent.

Portfolios that invest in small/mid capitalization companies involve greater risk and price volatility than an investment in securities of larger capitalization, more established companies. Such securities may have limited marketability and the firms may have limited product lines, markets and financial resources than larger, more established companies.

Portfolios that invest a significant portion of assets in one sector, issuer, geographical area or industry, or in related industries, may involve greater risks, including greater potential for volatility, than more diversified portfolios.

BNY Target Risk Portfolios are a series of discretionary investment strategies that incorporate multiple investment styles and, in some cases, multiple asset classes (e.g., fixed income and equity), intended to diversify the portfolio against the risks of investing in any one investment style. The comparison of returns for the BNY Target Risk Portfolios to market indices is intended to demonstrate the difference in historical performance that these strategies have achieved in relation to the historical performance of selected individual investment styles. The market indices selected are generally accepted as measures of an investment style used in one or more of the BNY Target Risk Portfolios. Broad-based indices within the fixed income asset class (e.g., Bloomberg U.S. Aggregate Bond Index) historically exhibit less volatility than styles within the equity asset class or portfolios, such as certain BNY Target Risk Portfolios, that have a significant portion of the portfolio exposed to equity. Indices within the equity asset class (e.g., MSCI USA IMI and MSCI ACWI ex USA (Net) indices) historically exhibit more volatility than broad-based styles within the fixed income asset class or portfolios, such as BNY Target Risk Portfolios, that have a significant portion of the portfolio exposed to fixed income.

The information on indices is presented for illustrative purposes only and is not intended to imply the potential performance of any fund or investment. Index performance assumes the reinvestment of all distributions but does not assume any transaction costs, taxes, management fees or other expenses, which would reduce the performance shown. Indices unmanaged and are not available for direct investment.

**Bloomberg US Aggregate Bond Index** represents securities that are SEC-registered, taxable, and dollar denominated. The index covers the US investment grade fixed rate bond market, with index components for government and corporate securities, mortgage pass-through securities, and asset-backed securities. These major sectors are subdivided into more specific indices that are calculated and reported on a regular basis. Securities must have at least one year to final maturity regardless of call features and must have at least \$250 million par amount outstanding.

**MSCI USA IMI Index** is an unmanaged index designed to measure the performance of the large-, mid- and small-cap segments of the US equity market. The index covers approximately 99% of the free float-adjusted market capitalization in the US.

**MSCI ACWI (All Country World Index) Index ex USA (Net of Taxes)** is a subset of the MSCI ACWI Index, a free-float-adjusted market capitalization weighted index that is designed to measure the equity market performance of developed and emerging markets. This version of the index excludes the United States. The index is net because dividends are reinvested after deducting a withholding tax from dividend distributions. Since taxes are withheld from the MSCI ACWI Index ex-USA (Net of Taxes), the performance of the MSCI ACWI Index ex-USA (Net of Taxes) will generally be lower than that of the MSCI ACWI Index ex-USA (Gross of Taxes).

Certain information contained herein: (1) is proprietary to Morningstar and/or its content providers; (2) may not be copied or distributed; and (3) is not warranted to be accurate, complete or timely. Neither Morningstar nor its content providers are responsible for any damages or losses arising from any use of this information. © 2026 Morningstar, Inc. All Rights Reserved.

Tax considerations, while important, are just one factor to consider before making any investment decision. BNY Advisors is not a tax advisor and this communication does not constitute tax advice. Clients should consult with a qualified tax professional for specific tax advice.

BNY Advisors is the discretionary manager for BNY Target Risk Portfolios and, in that capacity, may change the asset style and/or the investment vehicle allocation within these portfolios at its discretion.

Members of BNY Advisors' investment team may be invested in any of the BNY Advisors discretionary portfolios available; however, BNY Advisors has adopted a Code of Ethics, which is designed to address perceived or real conflicts between the trading activity on behalf of investors and the trading activity of employees. Monitoring of this activity is ongoing and intended to prevent an employee from reaping any benefit or unfair advantage over an investor with respect to such trading activity.

Prior to June 6, 2023, BNY Advisors, Inc. was known as Lockwood Advisors, Inc. (Lockwood), and BNY Target Risk Portfolios was known as Lockwood Asset Allocation Portfolios (LAAP).

For more information about BNY Advisors, as well as its products, fees and services, please refer to BNY Advisors' Form CRS (Customer Relationship Summary) and applicable Form ADV Part 2 Brochure, which may be obtained through your financial advisor, from the SEC's Investment Adviser Public Disclosure website at: <https://adviserinfo.sec.gov/firm/summary/106108> or by writing to: BNY Advisors, Attn: Legal Department, 200 Park Avenue, New York, NY 10166, or by calling (800) 200-3033, option 3.

**CFA®** and **Chartered Financial Analyst®** are registered trademarks owned by the CFA Institute.



## **DEFINITION OF TERMS:**

### **Form ADV**

The uniform application for investment adviser registration.

### **Beta**

Denotes volatility, or systematic risk, of a security or portfolio compared to the market.

### **EDGAR**

Electronic Data Gathering, Analysis, and Retrieval system.

### **Gross Expense Ratio**

Reflects the annual percentage of a fund's assets paid out in expenses. Expenses include management, 12b-1, transfer agent and other asset-based fees associated with the fund's daily operations and distribution, with the exception of brokerage commissions. It does not reflect fees and/or expenses that have been waived or reimbursed by the fund's adviser, reductions from brokerage service arrangements or other expense offset arrangements.

### **Gross Return**

Composite returns (gross of fees) represent historical gross performance with no deduction for advisory fees (which include program fees, consultant fees and other applicable fees); assumes reinvestment of dividends, capital gains and any other earnings; and is net of transaction costs. Individual client returns will be reduced by the advisory fee and any other fees and/or expenses incurred in the management of a client's account. Returns for periods longer than one year are annualized.

### **Net Expense Ratio**

Reflects the gross expense ratio reduced by the fees and/or expenses that have been waived or reimbursed by the fund's adviser, reductions from brokerage service arrangements or other expense offset arrangements.

### **Net Return**

Composite returns (net of fees) reflect the deduction of applicable advisory fees and transaction costs, and assume the reinvestment of dividends, income and any other earnings. Applicable advisory fees are based upon actual advisory fees deducted from each account in the composite. Returns for periods longer than one year are annualized.

### **Q**

Quarter.

### **SEC**

U.S. Securities and Exchange Commission

### **Standard Deviation**

Standard deviation, a gauge of risk, measures the spread of the difference of the returns from their average. The more a portfolio's or benchmark's returns vary from the average, the higher the standard deviation. Standard deviation is a measure of total variation of return and is a gauge of total risk, unlike beta, which measures market risk.

### **Sharpe Ratio**

Sharpe Ratio, a risk-adjusted measure, is used to gauge "reward to variability." This is used to risk-adjust the performance of a portfolio to determine whether the return earned was sufficient to reward the investor for the degree of risk (volatility) incurred.

### **Highest/Lowest Quarter Return**

Highest/lowest quarterly return for the period.

### **Number of Positive/Negative Quarters**

Number of positive quarters represents the number of quarters the return was above 0%/Number of negative quarters the return was less than or equal to 0%.

### **Weighted Internal Expense Ratio**

Since the expense ratio of each fund may be different, the weighted internal expense ratio uses a formula to blend expense ratios of each underlying fund/ETF in the model based on the respective ETF/fund's weight in the model. The result shown for the weighted internal expense ratio is the expense ratio for the overall model.